

Connection and Optical requirements

LUMIRANK
LED POSITION SYSTEM

Connection / Power requirements:

Use **only** the **origin** and include **M12 power Cable** and the Connection diagramm as show



| | |
|-------|--------------------------------------|
| WHITE | + 12V / 4,5A switched |
| BLACK | GROUND |
| BROWN | NC (not in use, please isolate them) |
| BLUE | NC (not in use, please isolate them) |

Important:

The LUMIRANK DISPLAY need a 12V 4,5A fused solid power supply and **connect to MAIN (30)** so the System is **still powerd if the Car is on PITSTOP !**

Power OK will shown on the LED market POWER and the ACTIVE LED shown blink for ecu ok.

The Cable with M8 Female Connector **is only** for external connetion to SAS DRIVER INFO DISPLAY or MyLaps X2 (the connetion diagramm of the M8 Cable **is not the same** as the M12 Power Cable)

Optical requirements:

- > **Do not Use** Tape as in shown in the Picture
- > **Do not** cover any LED (DOT Matrix / Tint Film etc.)
- > **Make a gap** from 10mm around the Display to all other Stickers
- > **Only use** clear film on Tearoff pull lable if near by LED
- > **Replace** old mounting stripe older 1Year or get white burned



Technical Data:

- > **Model:** LR 32S LED DISPLAY (or indentical)
- > **Interface:** CAN 1MB / UART / 868/915 MHZ Radio 100mW
- > **Operating voltage** 10 > 15 V DC / current consumption 3A
- > **Weight:** 250 g > 300g
- > **Size:** 140mm x 310mm x 20mm (incl Active Cooling)
- > **Ambient temperature:** -10 C ... 70 C (normal operation)



EU DECLARATION OF CONFORMITY:

Hereby, SAS-Technologies e.K., declares that the radio equipment type LUMIRANK LED Display is in compliance with Directive 2014/53/EU.

The full text of the EU declaration of conformity is available at the following internet address: www.sas-sas.de/eu-konform/

SAS TECHNOLOGIES



SAS-TECHNOLOGIES E.K. HECKENWEG 12
D- 90469 NUERNBERG WWW.SAS-SAS.DE
TEL: +491728289977 INFO@SAS-SAS.DE

Lumirank is protected by utility model
no. 20 2013 000 094.5
no. 20 2013 002 141.1

LUMIRANK

LED POSITION SYSTEM

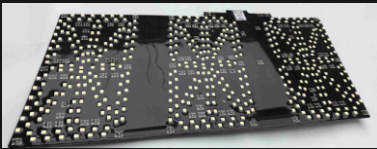
Info- and Installation Guide

LUMIRANK is an innovation that will make the race easier and more entertaining for spectators and on TV.

The purpose of the system is to display the **Race Position** and the **Driver Name** during the race by means of LED

LUMIRANK is permanently linked to the time keeping so that the displayed information is always up to date.

The System is small, light, thin and flexible allowing for **easy and fast installation**.



Bright LED make the 140mm high figures easy to see



High quality connector / cable and parts for maximum operation safety

DISPLAY Installation:

Mount the display on the inner side of the windscreen and **only** with the **origin adhesive strips** from SAS-Technologies. Connect the display **only** with the **origin** SAS Power Cable (green plug) ! For a save installation use **always new** self adhesive strips if you need to reassembly the display

Never use other self adhesive stripe or dual lock Systems !
(as they not UV and temperature robust, not flexible and not tested)



Adhesive stripe application instructions:

- Clean windscreen before mounting with alcohol
- **Please note:** nano products (anti Fog / Rain X) on the windscreen reduce adhesive strength !
- Ambient temperature at least 15 degrees for mounting (full adhesive strength after 24h)
- Use **only** the include black Tape around the display ege for driver anti dazzle
- Use **only** clear PU (helitape) for extra security

The Teams are responsible for correct power installation and mounting the display in a stable way and have to make sure, that the display can't detach from the windscreen.